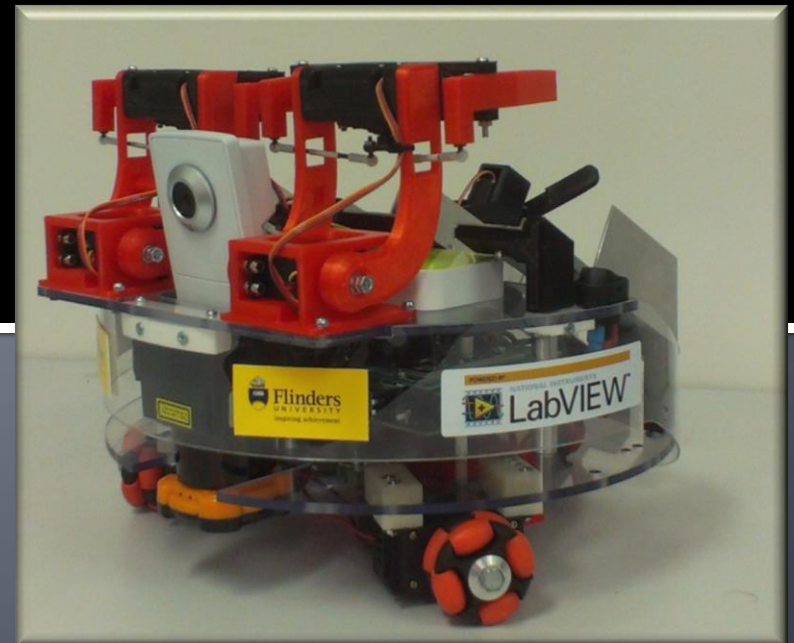




NI ARC 2013

Flinders kNights

Aurutaxis



The Team

Joel Cottrell
Electronics

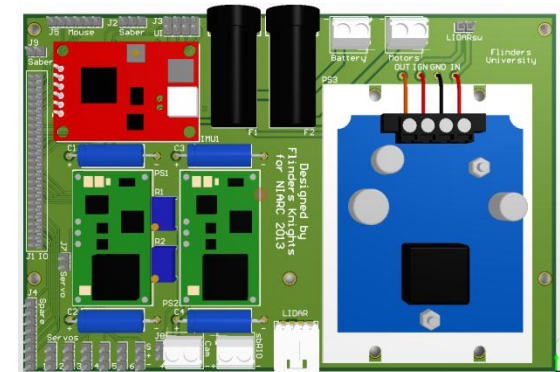
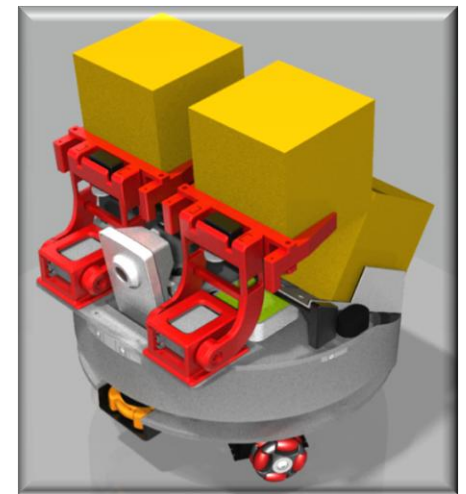
Rowan Pivetta
Design &
Mechanics

Joshua Renfrey
Software

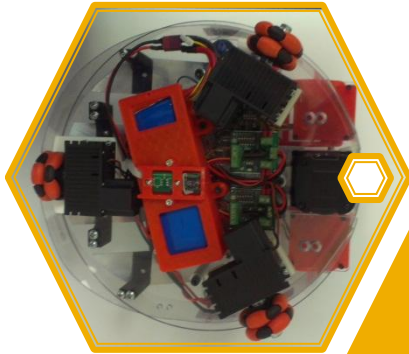


The Construction

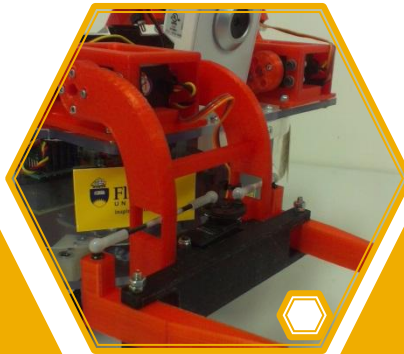
- Whole Design Generated in AutoDesk Inventor (CAD)
- Modular Construction
- 2 Levels of Polycarbonate
 - CNC Milled
- 3D Printing
 - Arms, Battery Compartment & Brackets
- PCB Manufacture
 - Custom made breakout board



The Robot Parts



3 Wheel
Holonomic
Wheel Base



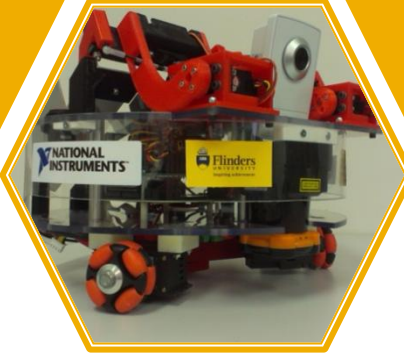
3D Printed
Robotic
Arms &
Parts



Hokuyo
UTM-30
LIDAR



Axis
M-1011-W
Camera



Dual Gripper
& Chute



Inventor 3D CAD Model

- Motor Control
- Motors
- Battery
- Mouse Sensor
- sbRIO
- Breakout
- Top Layer
- LIDAR
- Grippers
- Camera
- Router
- Chutes
- Shield

Many Thanks To

- Supervisor
 - Dr. Nasser Asgari
- CSEM Technical Services Group
 - Geoff, Damian, Craig D, Craig P, Richard, Mark
- Trewmac Systems
 - Josh, David
- National Instruments
- Swinburne University

